

## Cargo/Cruise Ship for sale



The RMS 'St Helena' was built to supply the island of St Helena, a UK Overseas Territory in the South Atlantic. The vessel has been maintained to the highest standards and is owned by St Helena Line Ltd and operated on behalf of the St Helena Government. She is to be sold following the completion of the island's first airport.

UK flag

Built 1990 A&P Appledore, UK.

3130 dwt on 6.016m draft.

105m loa, 19.2m beam.

Class: Lloyds Register. Special and drydock surveys passed 2015.

6,767 gross tonnes.

Accommodation: 156 passengers in 56 cabins, 56 officers and crew.

Dining salon. Lounge. Sun lounge. Swimming pool. Gymnasium. Stabilisers.

Air conditioning.

Cargo capacity 3750 cbm bale. 92 teu (of which 17 reefer).

2 holds, 2 hatches. Cranes 2/30 Derricks 2/10.

Main engines: 2 x Mirrlees KMR6MK3. 8880BHP.

Service speed 14knts on 19mt (IFO180) + MDO 2mt MDO per day

The vessel is currently in service and regularly inspectable at Cape Town, South Africa, where scheduled to call on 4th May. The vessel is expected to be ready for delivery to buyers in Cape Town during July/August 2016.



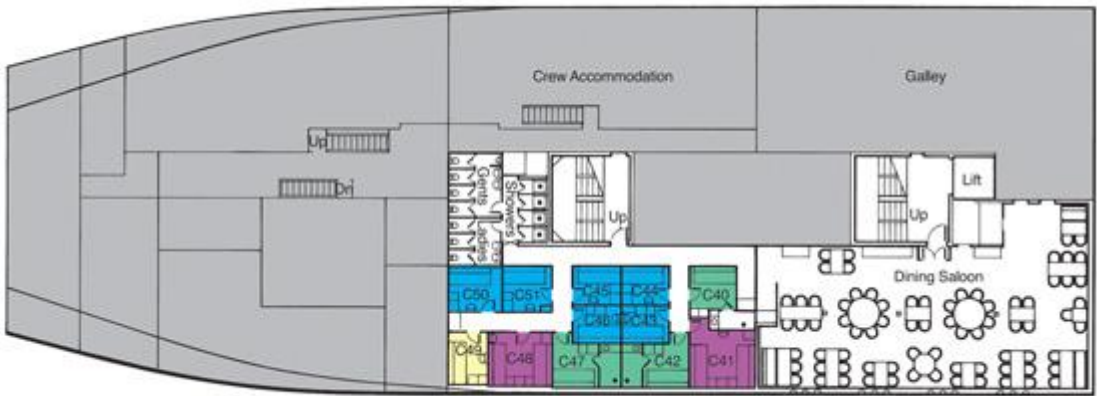
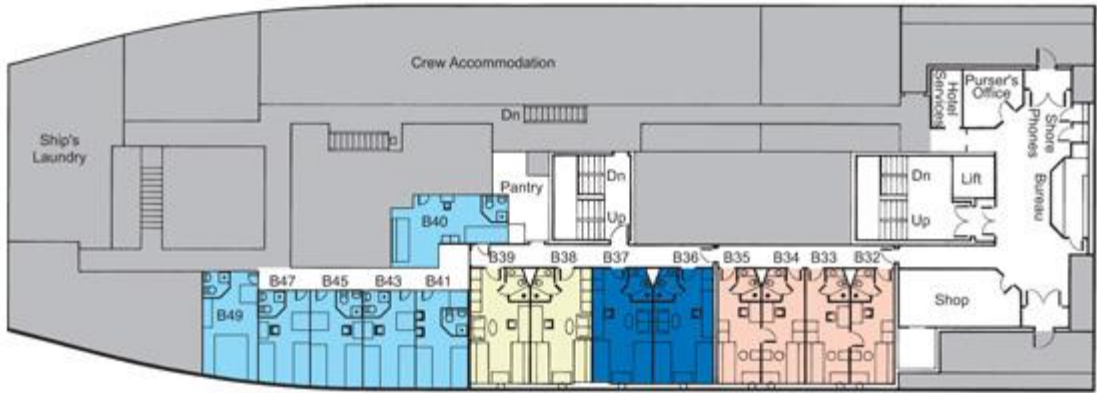


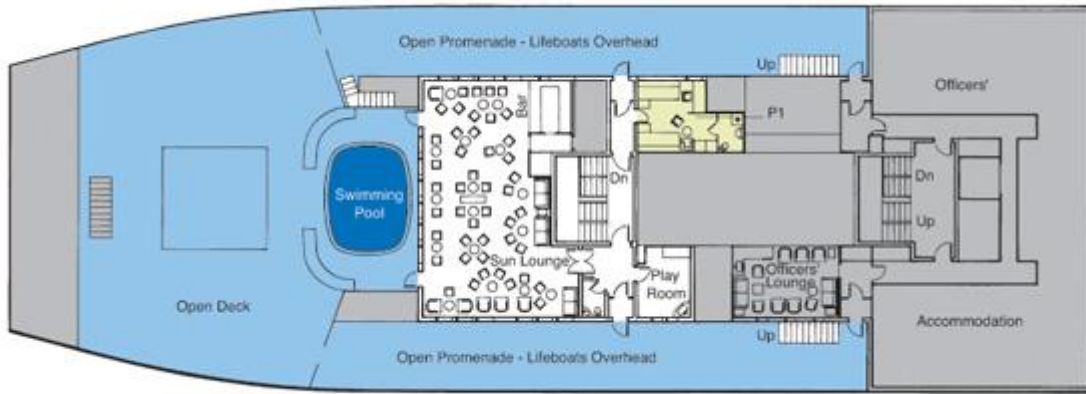
© Bruce Salt  
MarineTraffic.com











All particulars are believed to be correct but not guaranteed. All offers are made subject to prior sale, changes in specifications or price and to withdrawal from sales list without notice. Copyright © 2015 BOATS4EVER.COM LLC, All rights reserved.